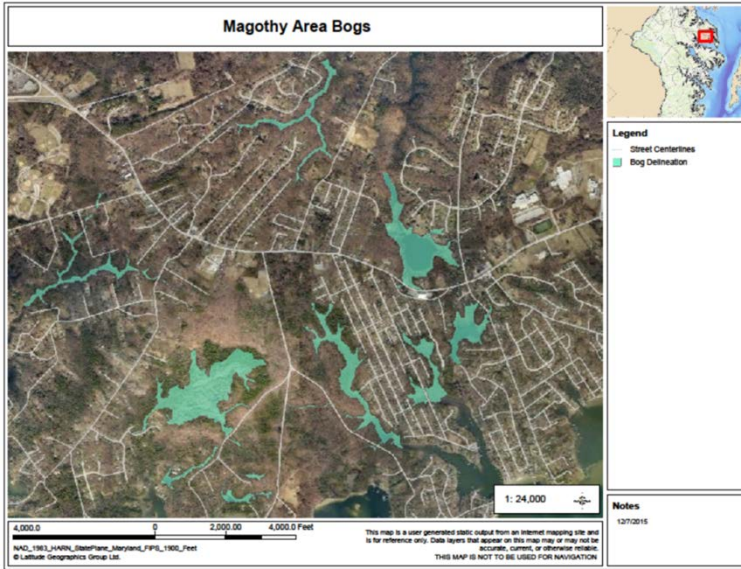


Bogs of the Magothy River Watershed



Sphagnum Moss



White-fringed Orchid



Sweet Bay Magnolia

Coastal Plain bogs are now rare ecosystems due to land development and nutrient runoff. They are formed in part by sphagnum moss in wet, open areas. Bogs support many rare, threatened or endangered plant and animal species, some of which are shown here.

Although bogs provide habitat for these unique plant communities, they are easily disturbed by storm water runoff containing sediments and pollutants. We must limit development in their watersheds to protect them.

By placing conservation easements on parcels adjacent to and containing bogs, we are preserving them for future generations. For further information, contact Magothy River Land Trust, P.O. Box 126, Severna Park MD 21146.



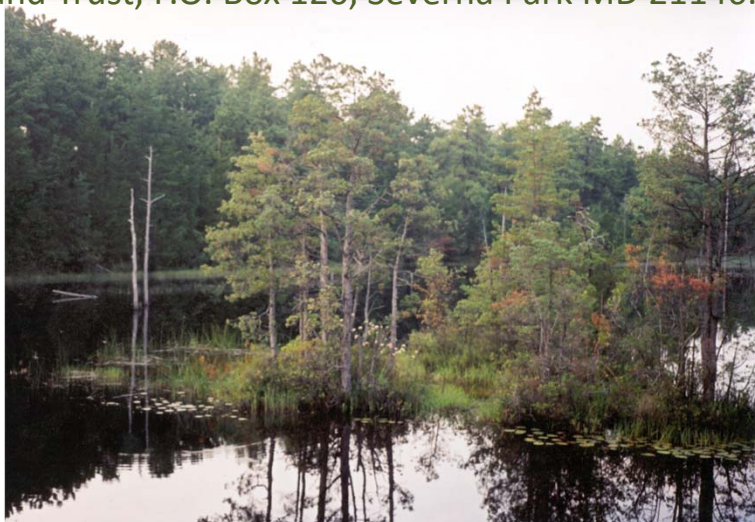
Cranberry



Giant Cane



Pitcher Plant



Cotton Grass Bog

Sundew and pitcher plant



Photos by Steve Barry, Arlington Echo